

# Thanet District Council



## Overview and Scrutiny Panel Regeneration and Growth update

Louise Askew - Head of Regeneration and Growth  
20 July, 2023

# Regeneration funding secured



Theatre Royal Margate Historic England Covid emergency funding	£	18,000
Clock House Historic England Covid emergency funding	£	23,981
Ramsgate Future High Street Fund	£	2,704,213
Ramsgate High Street Heritage Action Zone	£	500,000
Margate Town Deal capacity funding	£	231,000
Accelerated Towns Fund allocation	£	750,000
<b>Margate Town Deal</b>	<b>£</b>	<b>22,200,000</b>
<b>Ramsgate Levelling Up Fund</b>	<b>£</b>	<b>19,840,000</b>
Ramsgate Levelling Up Fund capacity funding	£	250,000
Margate Levelling Up Fund	£	6,306,078
Helping Hands funding for Business Engagement from KCC	£	75,000
Arts Council strategic funding for museums	£	20,000
Theatres Trust	£	10,000
UK Shared Prosperity Fund	£	1,150,000
<b>Total</b>	<b>£</b>	<b>54,078,272</b>

# How we share updates

- Council webpages
- The Wave
- The Loop
- Colin's updates
- Members updates
- Press releases to media
- Emails to stakeholders
- Stakeholder meetings
- Engagement events



# IN THE LOOP

The   
wave



Sailor's Church &  
Former Home for  
Smack Boys



# Ramsgate Town - Levelling Up Fund

*Investment in the Port to support an increase in employment locally.*

## **Intervention 1: Green Port Ramsgate**

### *Projects:*

- *Invest in Port Infrastructure to support operations of existing and future users.*
- *Refurbish ro-ro berth and 170m mooring spine.*
- *Create a Green Campus, potentially including Operations and Maintenance Centre of Excellence, Maritime skills training centre, Low Carbon Business Centre.*

**Funding allocation: £9.61m**

*Development of an inclusive Harbour to create opportunities for visitors, new job opportunities and centres for learning and work experience*

## **Intervention 2: Inclusive Harbour Assets**

### *Projects:*

- *Refurbishing the Smack Boys heritage building as a restaurant with rooms.*
- *Development of new quayside fishing facilities to enable freezing and processing of daily catches as well as facilitating the creation of a fish market and high-end restaurant.*
- *Refurbishing the Grade II listed Clock House creating a cultural heritage exhibition space and public cafe.*
- *Transformation of Pier Yard car park into a new town square.*

**Funding allocation: £9.39m**

*Investment in specific training infrastructure to directly link to the job creation activities from the Levelling Up interventions*

## **Intervention 3: Assets to Connect to Opportunity**

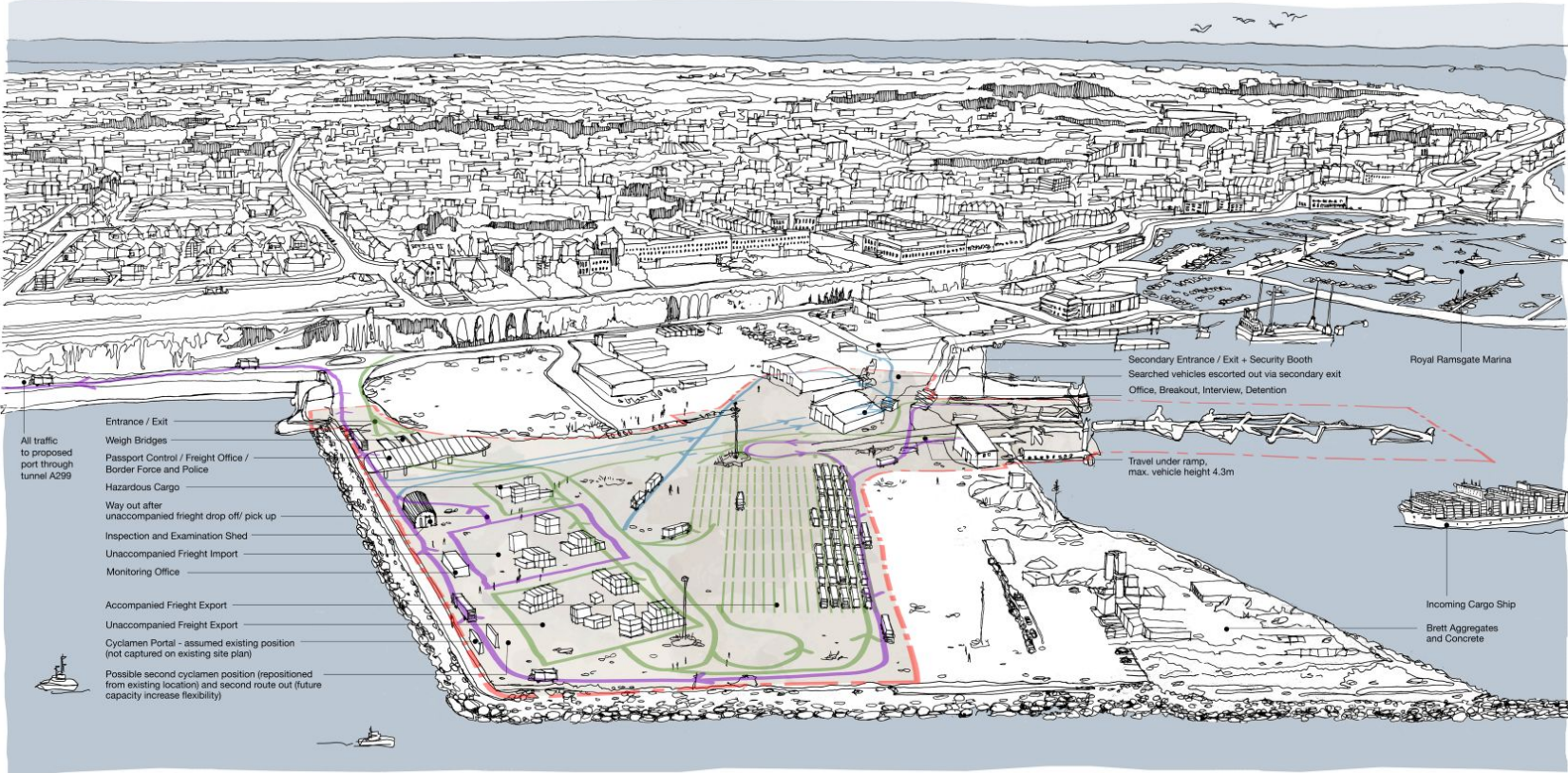
### *Projects:*

- *Establish physical and digital presence in two deprived neighbourhoods to support outreach and training, linking directly to the new employment opportunities in the town centre.*

**Funding allocation: £0.84m**

***Enhancing our unique maritime assets as the basis to promote skills and career progression.***

# Port of Ramsgate



All traffic to proposed port through tunnel A299

- Entrance / Exit
- Weigh Bridges
- Passport Control / Freight Office / Border Force and Police
- Hazardous Cargo
- Way out after unaccompanied freight drop off/ pick up
- Inspection and Examination Shed
- Unaccompanied Freight Import
- Monitoring Office
- Accompanied Freight Export
- Unaccompanied Freight Export
- Cyclamen Portal - assumed existing position (not captured on existing site plan)
- Possible second cyclamen position (repositioned from existing location) and second route out (future capacity increase flexibility)

Secondary Entrance / Exit + Security Booth  
Searched vehicles escorted out via secondary exit  
Office, Breakout, Interview, Detention

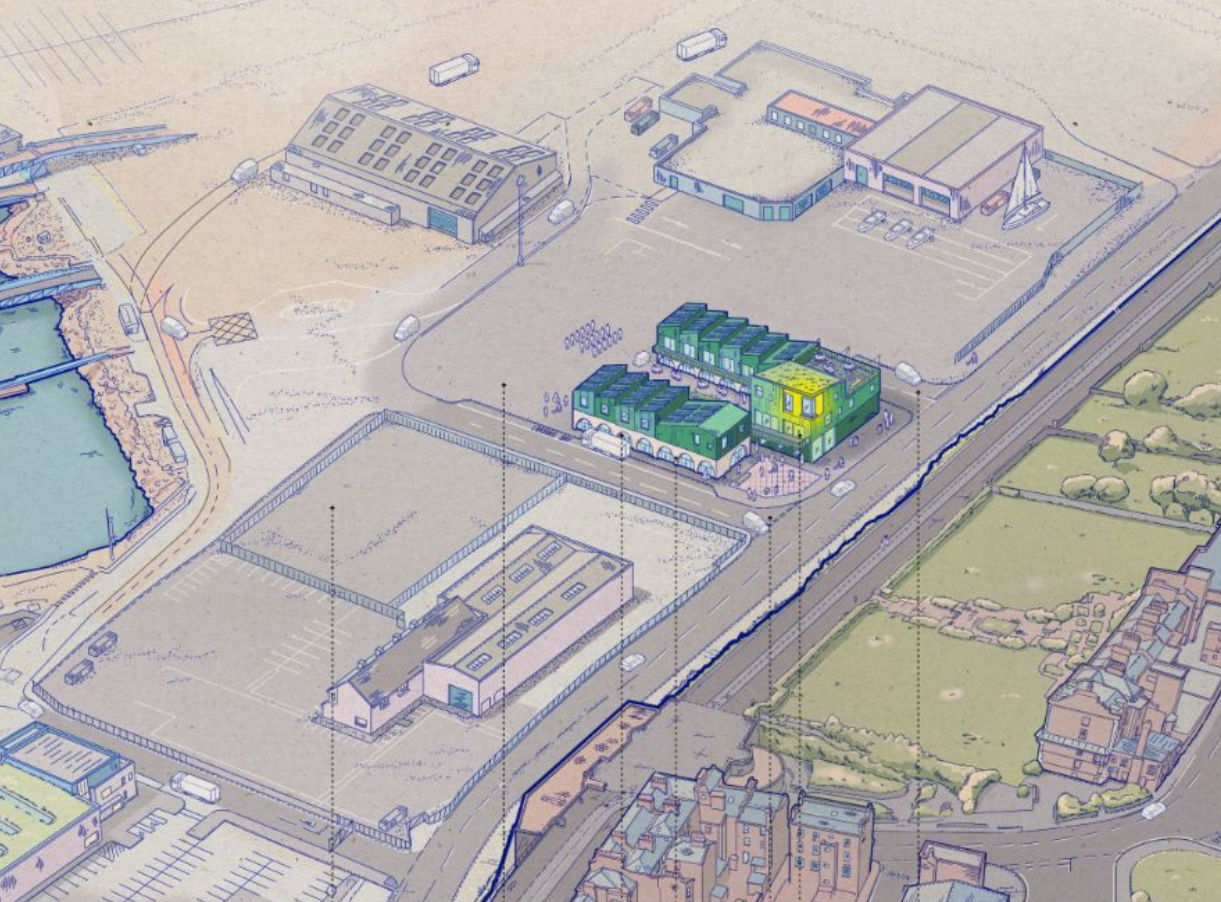
Travel under ramp, max. vehicle height 4.3m

Royal Ramsgate Marina

Incoming Cargo Ship  
Brett Aggregates and Concrete

--- Site Boundary    --- Freight Outbound    --- To/ from Search Area - Inbound + Outbound    --- Freight Inbound

# Green Campus



Secondary site for future development 07

Room for future extension/ expansion of eastern terrace 06

Individually let workspace units with direct vehicle service access 03

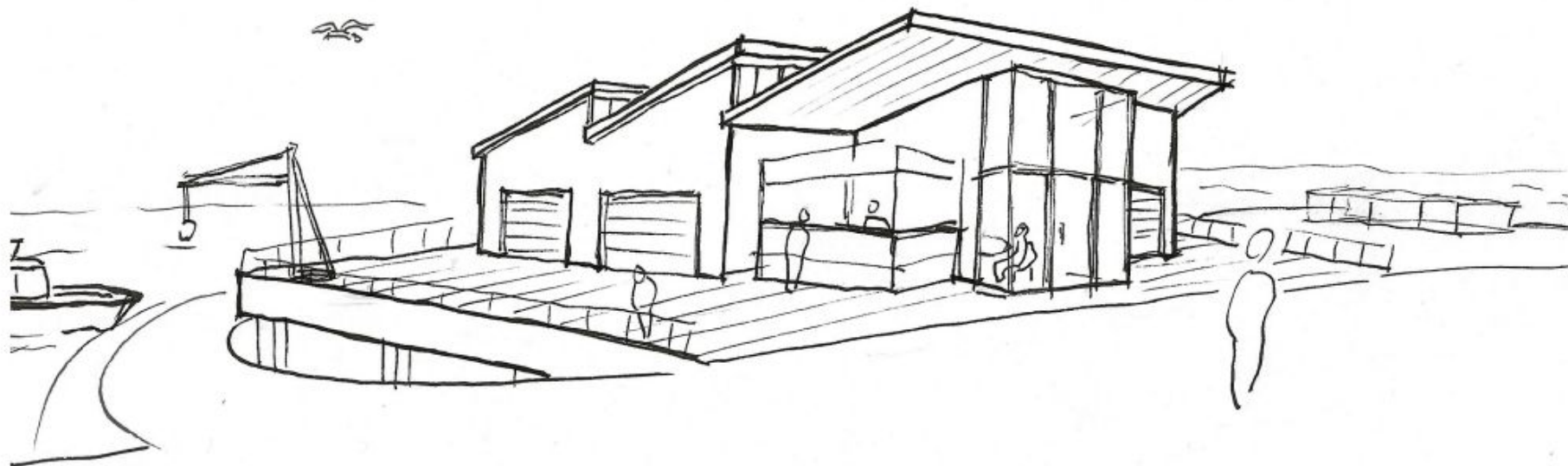
Large footprint unit suitable for anchor tenant 02

Cafe and core training facilities front onto Military Road 01

Loading bay for western terrace 05

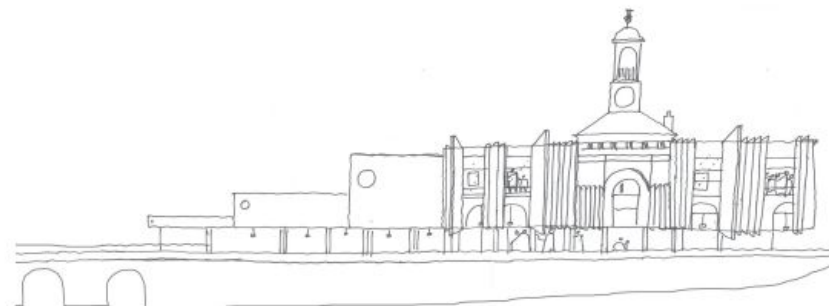
Shared vehicle access from Military Road 04

# Fishing Facility





# Clock House and Pier Yard



Early Harbour-side Elevation Concept Sketch



Early Pier Yard Elevation Concept Sketch



Early Harbour-side Elevation Concept Sketch

# Access to Opportunities





▲ Axo view of the proposed  
Community centre extension and  
outdoor areas

02

kitchen extension with  
natural roof ventilation  
and glazed coloured  
tiles

the central sunny  
lunch yard

06

glazed walkway  
with in-built  
storage and  
green roof

03

04

community allotments

01

existing building  
retained and  
upgraded

05

orchard with play  
apparatuses

05

existing container  
office relocated

# Margate Town Deal investments - £22.2million

Programme Management £150,000

*Repurposing long term vacant buildings to safeguard spaces to support growth in creative industries and associated skills and community uses.*

*Development of a new health and wellbeing facility, creating new business and commercial opportunities for the town, as well as a healthier population, enhancing access to the Cliftonville coastline*

*Significantly improved public spaces and enhanced connectivity and movement between the town centre, Old Town Northdown Road and the Cliftonville Coastline*

*A long term commercial solution for two major facilities in the town. Driving a 365 economy, increased footfall for the town, and further investment*

## Intervention 1: Scaling Margate's Creative Production and Skills

### Projects:

- Establishing and capitalising a Creative Land Trust for Margate including refurbishment of buildings for workspace and education (£6m)
- Improvements to Theatre Royal and 19 Hawley Square (£2m)
- Outreach, education and engagement programme (£900k)

**Funding allocation: £8.9m**

## Intervention 2: Coastal Wellbeing

### Projects:

- Access Walpole (£1.1m)
  - Refurbishment of tidal pool
  - Improvements to steps
  - Refurbishment of the Grade II listed lift and rotunda, with facilities
- Testing new uses, participation and skills programme for wellbeing, including beach facilities (£1.2m)
- Improved Coastal Environment
  - Skatepark (£750k)
  - Oval Bandstand and Lawns (£500k)

**Funding allocation: £3.55m**

## Intervention 3: Active Movement and Connections

### Projects:

- A series of Public Realm interventions to be identified through the business case development process
- Wayfinding scheme
- Toilets

**Funding allocation: £5.3m**

## Intervention 4: Diversifying Heritage Assets

### Projects:

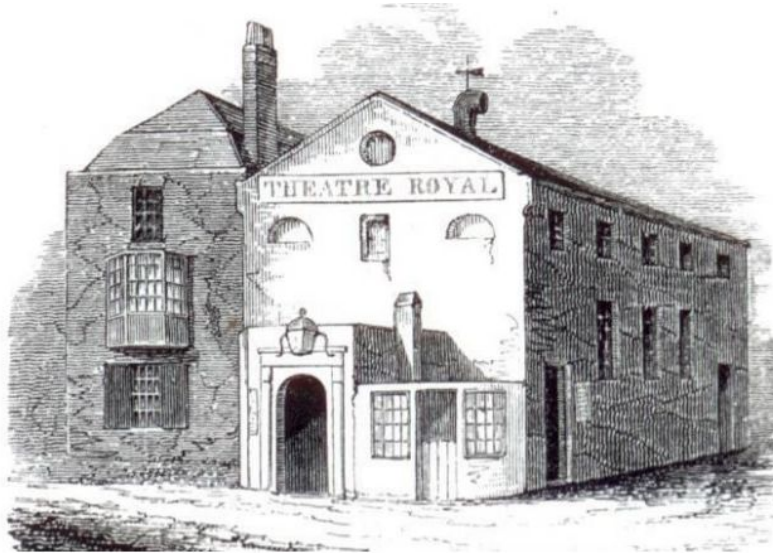
- Destination Dreamland: repurposing the Cinema building (£4m)
- Winter Gardens future options appraisal (Revenue ask - £300k)

**Funding allocation: £4.3m**

**Interconnected themes and outcomes to 'come together to help Margate thrive 365'**

# Scaling Margate's Creative Production and Skills

Margate Creative Land Trust



Theatre Royal Margate

IMAGE: The Theatre from Brooke's Place with the Old House to the left - Kidd 1831

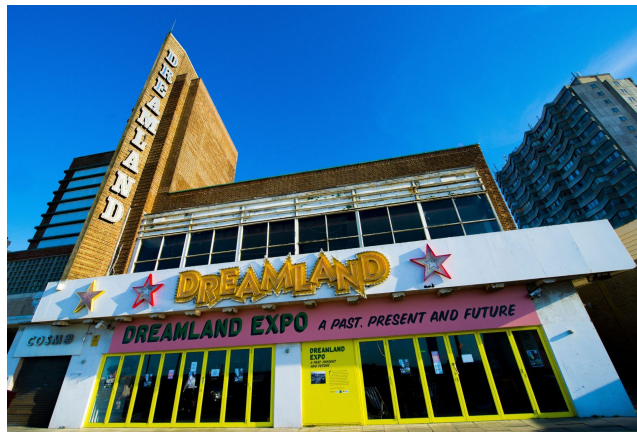
# Coastal Wellbeing



- Walpole Bay Tidal Pool improvements
- Access Walpole - improvements to steps and refurbishment of the Grade II Listed Lift
- Testing new uses, participation and skills programme for wellbeing, including beach facilities
- Improved Coastal Environment - Skatepark and Oval Bandstand and Lawns



# Diversifying Heritage Assets



Destination Dreamland



# Diversifying Heritage Assets

## Winter Gardens

